

“Stand By Kids”

Supporting Service for Child & Youth
Witnessed Family Conflict/Intimate Partner Violence

Enquiry

Tel: 2464-1518

Email: ceasecrisis@tungwah.org.hk



東華三院

Tung Wah Group of Hospitals

SPeaR- Child and Youth Educational Programmes

Targets

3-17 aged kids who have witnessed or been exposed to intimate partner violence



Vision

Kids who are witnessing or being exposed to family conflict or intimate partner violence will lead to their emotional instability and hurts. This Project aims to enhance the life skills of the kids in addressing the unfavourable circumstances. Also, the child-centred approach is used to enhance the knowledge of parents in understanding the needs of their kids.

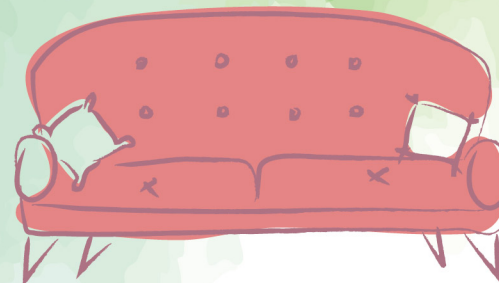
Objectives

- 1 Use of Child-centred approach to facilitate the kids expressing their emotional distress caused by the conflict of parents.
- 2 Educate the kids using non-violence communication method
- 3 Enhance the resiliency of kids when facing crisis
- 4 Enhance the supportive network of the kids



Programme Features

- 4-hours basic educational programme
- Enriched programme will be provided after the basic programme
- Individual or Group Session can be chosen

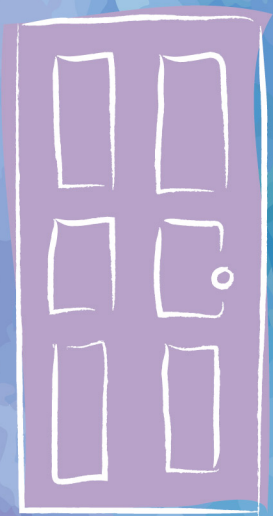


Programme Contents

- Knowledge of Intimate Partner Violence and responsibilities
- Knowledge and skills in problem solving when facing conflicts of parents
- Knowledge and skills in emotional management
- Positive communication skills with parents

Service Cluster

- Hong Kong Island and Outlying Islands
- Sha Tin, Tai Po and North
- Yuen Long and Tuen Mun





Charge

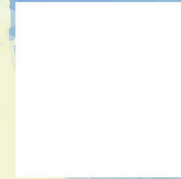
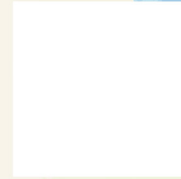
- Free of charge (except specific programmes)
- Transportation subsidy for families who have financial difficulties

Application

- Self-Approach
- Referred by Social Workers, School Personnel, Staff of other government departments, Medical Staff, etc.

Withdrawal

By written or verbal notification



Counseling Service

- Short Term Case Counseling
- Therapeutic Group

Supportive Service

- Peer Support Group
- Programme and Workshop

Parents Support Service

- Parents Education
- Parent-child Programme

Professional Support Service

- Early Identification and Risk Assessment
- Professional Training and Sharing on Intervention

